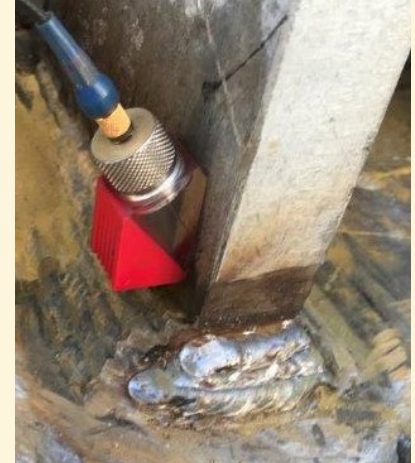


# Reese's

## PIECES

RTS specializes in providing weld inspections, mappings, and condition assessment services to the tower & pole industries



### Take The Weld Symbol Quiz

Per AWS A2.4 Standard Symbols for Welding, Brazing, and Nondestructive Examination, omitting the depth of bevel and groove weld size dimensions from a groove weld symbol on the drawing requires? (Answers on bottom of page 2)

- A) A partial penetration (PJP) groove weld that is 50% of the joint in depth
- B) A complete penetration (CJP) groove weld that extends through the thickness of the joint
- C) A partial penetration (PJP) groove weld that has no specified joint depth

In a weld symbol, what is the location significance of the arrow?

- A) Information applicable to the arrow side of the joint is placed below the reference line of the weld symbol
- B) Information applicable to the other side of the joint is placed above the reference line of the weld symbol
- C) There is no significance
- D) Both A & B

A fillet weld would be used for what joint type?

- A) Butt joint
- B) T-joint
- C) Edge joint
- D) None of the above

For a pole longseam shop weld, what welding process would most likely be used?

- A) SMAW – shielded metal arc welding
- B) FCAW – flux-core arc welding
- C) SAW – submerged arc welding
- D) GMAW – gas metal arc welding

## Reese Tower Services Renews Valuable Safety Training

Last quarter's article on climbing safely discussed how far we have come as an industry regarding climber safety with respect to training, rescue, equipment, and industry standards. It discussed the challenges we still face keeping safety at the forefront of our projects. We addressed challenges such as the environment, project budgets and schedules, pre-project planning, the condition of the structures including modifications and anchors, and the use of lift equipment. Climber training and rescue continue to be one of the most important

items on this list. How comfortable are your crews with rescue? Can they perform a rescue in a safe and timely manner under duress? Do they have and carry the proper rescue equipment to each job? Do they only practice rescue every 2 years at their renewal?

RTS was in Phoenix recently at Kathy Gill's Tower Safety ([towersafety.com](http://towersafety.com)) training facility. High quality training is crucial for climbing and rescue. Gill at Tower Safety uses her expertise as a long-time climber and rescuer along with her skills as an instructor to provide a thorough and detailed curriculum. She has experience in various industries that involve climbing, which allows her to relate to her students in many ways. Furthermore, her facility has monopoles, self-support towers, a complete wind turbine, confined spaces including a tank, an indoor training area, and a fully outfitted classroom area. The facility allows her to provide students a great classroom experience and the option to practice on almost every type of structure students will encounter in our industry. Whether someone is a new climber or seasoned veteran, Tower Safety is a hands-on facility where you can receive or renew your certifications, learn about new concepts, and stay abreast of industry standards. RTS spent a significant amount of our training time on rescue principles, practice, and the various equipment options available to efficiently and safely rescue someone from a tower. The safety industry is continuing to evolve and develop new equipment to make climbing and rescue safe and efficient. □



# Reese's MINIATURES IN THE NO-FALL GUY



A BRIAN REESE PRODUCTION

THIS IS A STORY ABOUT HEROES! YOU MAY HAVE SEEN THEM, BUT YOU DON'T KNOW WHO THEY ARE. IN TODAY'S DIGITAL AGE YOU'VE UNKNOWINGLY CHEERED FOR THEM WHEN YOUR COMMUNICATION NETWORKS STAY ROBUST AND RELIABLE!



THEY ARE THE NO-FALL GUYS!

**TOWER CLIMBERS** ARE RESPONSIBLE FOR ASCENDING RIDICULOUS HEIGHTS TO INSPECT & REPAIR EQUIPMENT THAT KEEP OUR NETWORKS OPERATIONAL.



THESE **NO-FALL GUYS** ACCOMPLISH THIS TASK AND OTHER OFTEN DANGEROUS RESPONSIBILITIES BY USING ONLY THE PROPER EQUIPMENT AND FOLLOWING TESTED AND APPROVED GUIDELINES. ORGANIZATIONS SUCH AS NATE AND OSHA ARE VIEWED AS CHAMPIONS OF THESE GUIDELINES, WHILE PRIVATE COMPANIES ALSO OFFER TRAINING, SEMINARS, AND EQUIPMENT FOR CLIMBERS.

EDITORS NOTE: IT WAS REPORTED THIS SUMMER BY RTS OF TWO BEAR CUBS IN COLORADO WHO CLIMBED A TOWER WITHOUT USING PROPER SAFETY EQUIPMENT. SEE SECOND QUARTER NEWSLETTER FOR MORE DETAILS.



THE RIGHT EQUIPMENT IS MUCH MORE THAN A COOL TRUCK!

EMPHASIZING MORE THAN HAVING THE RIGHT EQUIPMENT, BUT ALSO THE QUALITY AND MAINTENANCE OF EACH PIECE OF GEAR, HELPS ENSURE TOWER CLIMBERS ARE PREPARED, PROTECTED, AND EFFICIENT AT HEIGHTS. REGULAR INSPECTIONS, MAINTENANCE LOGGING, AND ADHERENCE TO SAFETY STANDARDS ARE NON-NEGOTIABLE PRACTICES THAT KEEP TOWER CLIMBERS SAFE.

SAFETY IS A CLIMBERS LIFELINE AND IMPORTANT SAFETY ITEMS INCLUDE: HIGH QUALITY FULL-BODY HARNESS, SAFETY HELMET, CARABINERS, SHOCK ABSORBING WORKBOOTS, CLIMBING GLOVES, SAFETY GLASSES, AND LANYARDS.



INFRASTRUCTURE IN THE U.S IS AGING FASTER THAN WE CAN MAINTAIN IT. ACCORDING TO THE AMERICAN SOCIETY OF CIVIL ENGINEERS, THE COUNTRY NEEDS TO INVEST NEARLY THREE TRILLION DOLLARS OVER THE NEXT 10 YEARS.

ADDITIONALLY, THE INTEGRITY OF STRUCTURES IS CONSTANTLY UNDER ATTACK BY THE ELEMENTS, CORROSION, AND FATIGUE.

WHO WILL YOU CALL?

REESE TOWER SERVICES. WE BRING YEARS OF EXPERIENCE IN GROUND-BASED AND SAFE AERIAL INSPECTIONS INCLUDING CONDITION ASSESSMENTS, RETRIEVING FIELD DATA, PERFORMING WELD INSPECTIONS, AND NON-DESTRUCTIVE WELD EXAMINATIONS. WHETHER YOUR MOTIVATION IS STRUCTURAL OPTIMIZATION OR EXTENDING THE LIFE OF YOUR STRUCTURES,

RTS WELCOMES THE OPPORTUNITY TO EARN YOUR TRUST AND BUSINESS.  
(570) 359-3293

WORDS & PICTURES by Scott and Karl Dolash