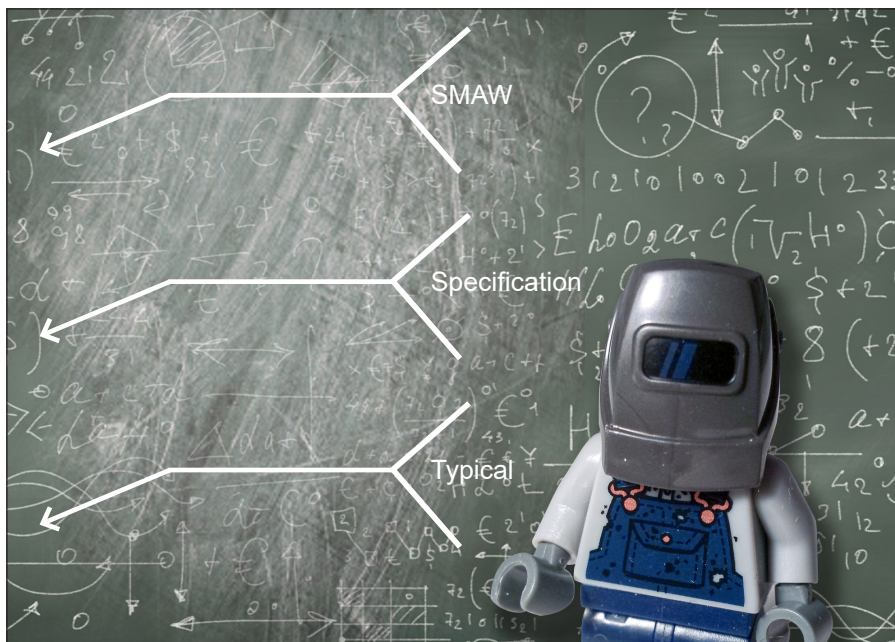


Reese's

PIECES

RTS specializes in providing weld inspections, mappings, and condition assessment services to the tower & pole industries



RTS Announces New Lighting Pole Design Standard Published by ASCE

Reese Tower Services is pleased to announce that the American Society of Civil Engineers (ASCE) has released ASCE 72-21, Design of Steel Lighting System Support Pole Structures. Prepared by the Codes and Activities Division of the Structural Engineering Institute of ASCE, the inaugural Standard provides design parameters applicable to lighting pole structures.

The consensus Standard covers proper specification and/or development of the various loads and load combinations to be applied to lighting support poles as well as safe load resistance requirements. Special design issues include structure deflection, vibration, and fatigue. Issues related to fabrication and installation, as well as critical ongoing inspection and maintenance best practices are also addressed.

ASCE 72-21 unifies the core body of best practice knowledge available in the structural engineering community and provides public and private agencies, practicing engineers, installers, and facility owners a consistent roadmap. It is the Committee's intent that the International Building Code (IBC) will ultimately recognize and adopt the Standard. The Standard is now available to purchase on ASCE's web site.

Brian Reese, President of RTS and Chairman of the ASCE 72 Committee commented, "This Standard is long overdue for the lighting industry. The industry has not been consistent in its application of design standards and in many cases, poles were provided with the lighting systems simply as an afterthought. Crucial subjects such as fatigue, inspection, and maintenance are addressed which are required to ensure the long-term reliability of these structures and ensure public safety." □

Reese Tower Services assists in maximizing the value of vertical assets by structural enhancements, inspections, and maintenance. RTS' expertise lies in its years of experience with pole structures from engineering through manufacturing, installation, and field modifications for repair and/or to enhance structural capacity. RTS is an expert in ground-based, aerial, and UAS inspections including condition assessments, retrieving engineering data, performing weld inspections, and non-destructive testing.

What Is That Weld Symbol?

Continuing this quarter with weld symbols, in this installment we are going to discuss the significance of the tail of the weld symbol. Sometimes a weld symbol has a 'tail' and sometimes it does not. A tail is not a mandatory component of a weld symbol – it is beneficial to provide additional information to the welder. Per AWS A2.4, the welding process to be used may be specified by placing the appropriate designation in the tail of the welding symbol. The tail may also specify a reference – specifications, codes, or any other applicable document to the project that will benefit the welder. Repetition of identical welding symbols on a drawing may be avoided by designating a single weld symbol as 'typical' or usually designated as 'typ' and pointing the weld symbol arrow to the representative weld joint. □



2022 Race Car Sponsorship

RTS announced another year of sponsorship for Gordie Buchman's number 55B race car for this upcoming season. Racing at Evergreen Raceway, Gordie is running a modified race car generating 500 HP. Similar to last year, the paint scheme is yellow and blue this season. President Brian Reese said, "We are excited to sponsor Gordie again this year and look forward to seeing him in the winner's circle." Evergreen Raceway (evergreenracewaypark.com) is a 1/3 mile asphalt oval located in Drums in the mountains of northeast Pennsylvania. □

Reese's MINIATURES

IN

TOP GUN



IN 2019
RTS PILOTS ATTENDED
AN ELITE DRONE
TRAINING PROGRAM.
NO AERIAL COMBAT TOOK
PLACE BUT THE HANDFUL OF
MEN AND WOMEN WHO
GRADUATED ARE NOW
CONSIDERED AMONG
THE BEST IN THE INDUSTRY.
THEY ARE CALLED...
TOP GUN

STARRING CODY REESE.
A BRIAN REESE PRODUCTION.

OUR STORY PICKS UP SOMEWHERE
OVER THE HEART OF THE INDIAN OCEAN,
WHERE OUR PILOTS ARE ENGAGED IN A DOGFIGHT
AND WITH GREAT ODDS AGAINST THEM!



"HEY MAV, STAY WITH HOLLYWOOD!"
"YEAH MAV, STAY WITH HOLLYWOOD!"
"HOLLYWOOD, YOU LOOK GOOD."
"I'M GOING AFTER THOSE BOGEYS!"



"I'M GONNA HIT THE BRAKES,
HE'LL FLY RIGHT BY."

"HE'S GONNA GET
THE LOCK ON US!"

"MAYDAY, MAYDAY. MAV'S IN
TROUBLE. HE'S IN A TAIL SPIN!"



"THIS BOGEY IS
ALL OVER ME!"

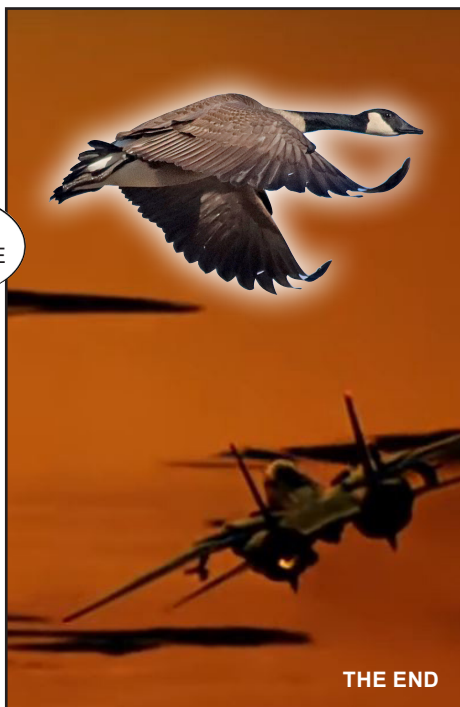
CODY!

"TOWER, THIS IS GHOST RIDER
REQUESTING A FLYBY."



TALK TO
ME, GOOSE

"HEADIN' INTO TWILIGHT
SPREADIN' OUT HER WINGS TONIGHT
SHE GOT YOU JUMPIN' OFF THE DECK
AND SHOVIN' INTO OVERDRIVE"



THE END

LEADING-EDGE TECHNOLOGY USED
TO ACHIEVE THE MOST ENHANCED
CLOSE-UP IMAGES WITHOUT
UNNECESSARY CLIMBING ARE JUST
TWO REASONS RTS IS
THE INDUSTRY LEADER IN
CONDITION ASSESMENT.



FOR INFORMATION ON RTS AND ITS
SERVICES VISIT US ON
FACEBOOK, LINKEDIN, OR:
RESEETOWERSERVICES.COM

WORDS & PICTURES by Scott and Kari Dolash